

Contika Aps
Hindhøj 82
8382 Hinnerup
Tel: 8624 5066

DaqLink

Stand alone, 4 Channels Data logger





DaqLink –Main Features

- **Multi-channel** provides 1-2 internal sensors and 4 analog External sensors, one channel can be Digital sensor (discrete logic and pulse inputs)
- **Real-time** - Online operation with data results on screen (when connected to PC via USB cable)
- **Independent** - Manual or PC operation with on-site monitoring via two-row LCD display
- **Intuitive** - Simple keypad and easy-to-navigate menus



DaqLink –Main Features

- **Wide Sample Interval Selections**

Sample rate from one per 1 second to one per 18 hours

- **Reliable** Continuous data storage when power fails since we use non-volatile memory for data storage

- **Long life** - Rechargeable battery (4.8V NiMH battery) lasting up to 6 months/AC adapter

- **Variety** - Four alarm levels with visual LCD for each sensor, and audible alarms

- **Non-stop** - Continuous data storage to large onboard memory and periodic USB downloads

- **Storing** up to 59,000 Samples



DaqLink – Specs

DBSA710

- Internal Temperature (-20 to 50 °C) RF logger + 4 external inputs
- External Inputs: 0-1 V, 4-20 mA, Thermocouple (J, K, T), PT-100 (2-wire)
Pulse Counter, Frequency
- 12 V power excitation
- Includes AC power adapter

DBSA720

- Internal Temperature/Humidity(5 to 95%) RF logger + 4 external inputs
- External Inputs: 0-1 V, 4-20 mA, Thermocouple (J, K, T), PT-100 (2-wire),
Pulse Counter, Frequency
- 12 V power excitation
- Includes AC power adapter



DaqLink – Logger operation

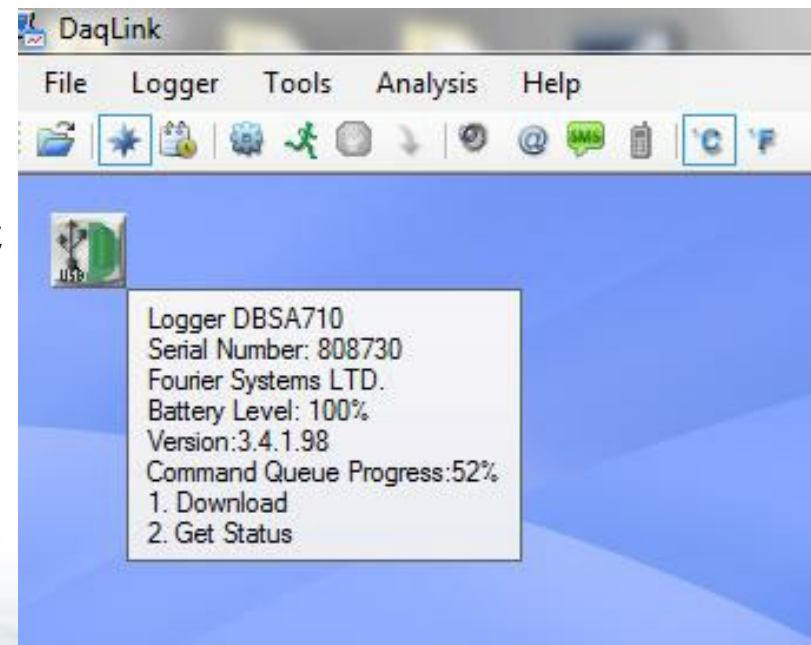
- Sample rate from one per 1 second to one per 18 hours
- Option to 'Run from Logger'
- Option to 'Pause' logger and 'Stop and shut-down' logger
- Option to download data to multiple PCs
- Cyclic or Run-once modes
- 'Memory full' message
- View current measurements for all sensors
- View Max – Min measurements
- View battery level
- Alarm Buzzer





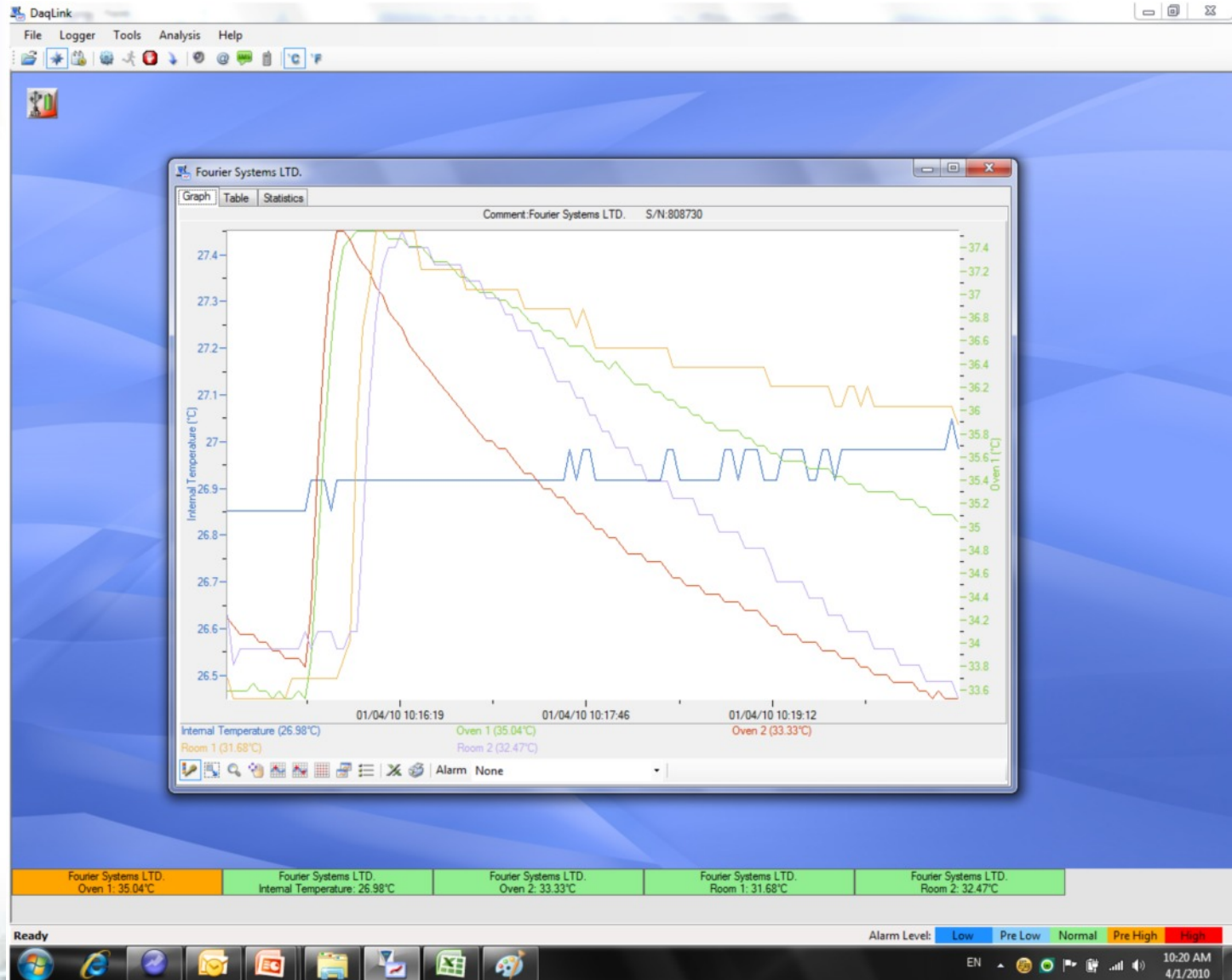
DaqLink – PC SUITE

- Map view window
- When logger is connected to PC and in continuous mode
- up to 6 sensors views are available online
- Online graph
- One logger can connect at a time to the S/W
- Mail and SMS Alarms: in Continuous mode while logger is connected to PC
- File management, Save logger data as project
- Graph analysis
- Define new sensors
- Export data as CSV





Data View





Alarm Features

- 4 alarm levels allow programming of 4 separate parameters with alarm delay and duration

Setup

Device Setup Alarm Setup

Alarm delay: 00:00:09 (depends on the sampling interval)

Pre-alarm delay: 00:00:09 (depends on the sampling interval)

Alarm duration: 00:01:00

Sound alarm during pre-alarm

Low Alarm Pre-low Alarm Pre-high Alarm High Alarm

Parameter	Low Alarm	Pre-low Alarm	Pre-high Alarm	High Alarm
Internal Temperature	<input type="checkbox"/> -20.00	<input type="checkbox"/> -20.00	<input type="checkbox"/> -20.00	<input type="checkbox"/> -20.00
Internal Humidity	<input type="checkbox"/>	<input type="checkbox"/>	<input type="checkbox"/>	<input type="checkbox"/>
Voltage 0 - 1 V	<input checked="" type="checkbox"/> 0.00	<input checked="" type="checkbox"/> 1.00	<input checked="" type="checkbox"/> 1.00	<input checked="" type="checkbox"/> 1.00
PT-100	<input type="checkbox"/> -200.00	<input type="checkbox"/> -200.00	<input type="checkbox"/> 400.00	<input type="checkbox"/> 400.00
PT-100	<input type="checkbox"/> -200.00	<input type="checkbox"/> -200.00	<input type="checkbox"/> 400.00	<input type="checkbox"/> 400.00
PT-100	<input type="checkbox"/> -200.00	<input type="checkbox"/> -200.00	<input type="checkbox"/> 400.00	<input type="checkbox"/> 400.00

Setup and Run Setup Only Close



Alarm Features



- Ability to add and edit contacts and distribution groups
- Alarming via SMS / Email messaging

Send	To...	<u>ori@furiersystems.com;</u>
	Cc...	
	Subject:	DaqLink Alarm: Internal RH PreLow Alarm, Value Detected: 40.33%

DaqLink Alarm
Comment: Oven 1floor
S/N: 910534
10-03-10 10:40:44
Internal RH PreLow Alarm,
Value Detected: 40.33%

