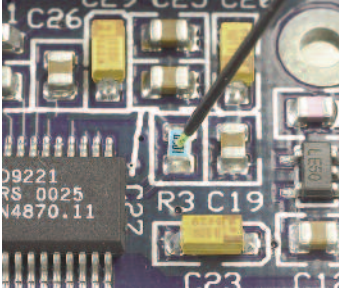


## Immune, Accurate and Safe Fiber Optic Probes and Accessories in Hostile Environments

Leading the industry for more than 30 years, LumaSense Technologies' line of Luxtron® fiber optic thermometry probes are rugged and robust. Using Luxtron's patented technology, our Fluoroptic® probes are chemically resistant and immune to electrical noise. LumaSense Technologies offers probes for an array of applications and has extensive experience designing customized probes for OEM applications.



STS Surface Temperature Probes

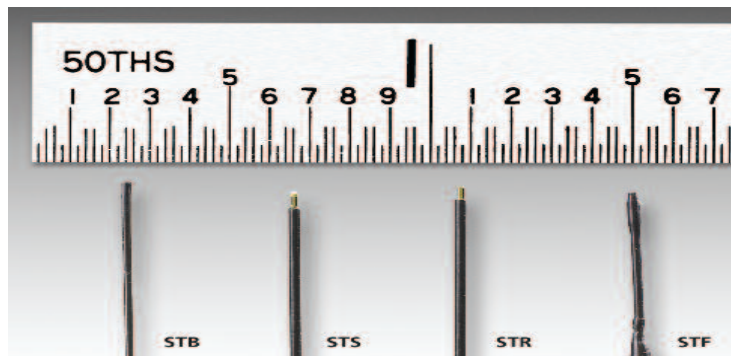
### Benefits

- Probes immune to a wide range of harsh environmental characteristics including but not limited to RF, MRI, Microwave
- Chemically Resistant
- Non-metallic
- Corrosion Resistant
- Safe for Flammable or Explosive Environments
- Stable and Inert Sensor



MicroProbe

	Temperature Range (°C)	Response Time (Sec.)	Lengths Available	Example Applications
Fast Immersion (Air and Liquid): STF	0 to 295	0.25	1m, 2m, 5m, 10m	<ul style="list-style-type: none"> <li>– Monitoring of high voltage experiments</li> <li>– Temperature gradient mapping of fast temperature ramps</li> <li>– Temperature control of microwave processes</li> </ul>
Surface Temperature: STS	-25 to 200	0.025	2m, 5m	<ul style="list-style-type: none"> <li>– Heat monitoring of “live” electrical circuits</li> <li>– Temperature monitoring of implant leads at precise locations</li> <li>– Temperature monitoring of bonding surfaces</li> </ul>
Remote Temperature: STR	-25 to 330	0.025	2m, 5m	<ul style="list-style-type: none"> <li>– Testing of electro-explosive devices (EEDs)</li> <li>– Temperature monitoring of small targets</li> </ul>
Medical: STB	0 to 120	0.25	1m	<ul style="list-style-type: none"> <li>– Temperature monitoring of clinical procedures and academic research</li> </ul>
Medical: MedFP	0 to 120	0.25	1.2m	<ul style="list-style-type: none"> <li>– Temperature monitoring of ablation applications</li> </ul>
MicroProbe	0 to 120C	0.2.0	1m	<ul style="list-style-type: none"> <li>– Minimally invasive immersion or surface temperature</li> <li>– Medical research</li> <li>– Smallest diameter commercially available probe</li> </ul>
<b>Extensions</b> General Purpose: SST	-40 to 105		2m,5m, 10m	<ul style="list-style-type: none"> <li>– Standard jacketed extension cable for normal use</li> </ul>
Heavy Duty: HST	-40 to 80		2m, 5m, 10m	<ul style="list-style-type: none"> <li>– Heavy jacketed extension cable for rough environments</li> </ul>
Medical: FOC-ST	0 to 80		2m, 5m, 10m	<ul style="list-style-type: none"> <li>– Required extension cable for use with STB medical probe</li> </ul>
Medical: MedFP Ext	0 to 120		5m	<ul style="list-style-type: none"> <li>– Required extension cable for use with MedFP Probes</li> </ul>

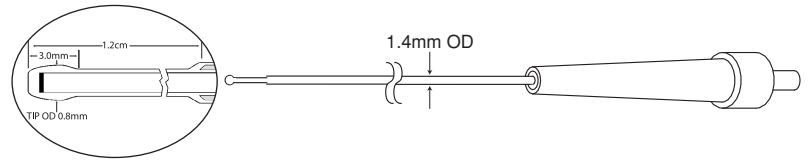


# Luxtron® Fiber Optic Thermometry Probes & Accessories

Probes available in 2, 5, and 10 meter lengths unless otherwise specified.

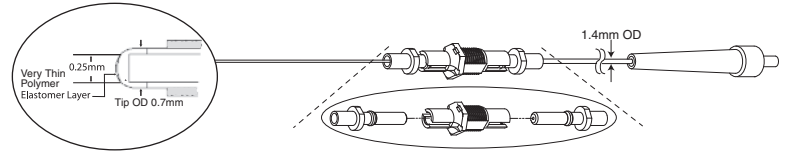
## STF Probe

Application: Fast response immersion  
 Temperature Range: 0 to 295°C<sup>1</sup>  
 Response Time: 1.25 seconds still air; 250 milliseconds in stirred water



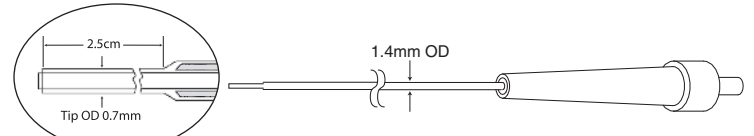
## STS Probe Kit

Application: Surface contact  
 Temperature Range: -25 to 200°C  
 Response Time: 25 milliseconds  
 Kit Includes: 2m or 5m probe and two 10cm replaceable tips (tip OD 0.7mm)



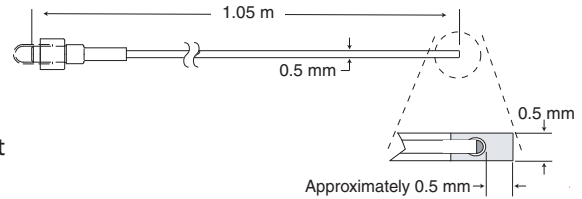
## STR Probe Kit

Application: Non-contact remote sensing  
 Temperature Range: -25 to 330°C  
 Response Time: 0.25 seconds  
 Kit includes: Alpha phosphor material, three types of binders, 2m blank probe, and Remote Sensing User's Guide



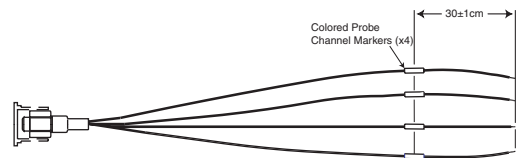
## STB Probe<sup>2</sup>

Temperature Range: 0 to 120°C  
 Length: 1 meter  
 Response Time: 0.25 seconds  
 Fiber Type: 200µm hard clad silica fiber with Tefzel® jacket  
 Connector Type: RPC-1 molded plastic



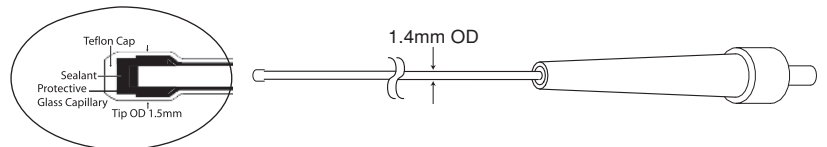
## MedFP Probe<sup>3</sup>

Temperature Range: 0 to 120°C  
 Length: 1.2 meter  
 Response Time: 0.25 Seconds  
 Fiber Type: 200µm hard clad silica fiber  
 Color: Black with color bands  
 Connector Type: RPC-1 molded plastic



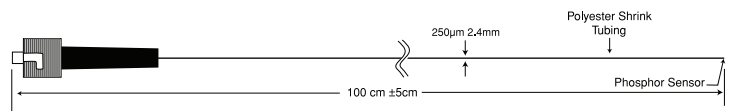
## STM Probe

Application: General purpose immersion  
 Temperature Range: -25 to 250°C\*  
 Response Time: 5 Seconds still air; 0.7 seconds in stirred water



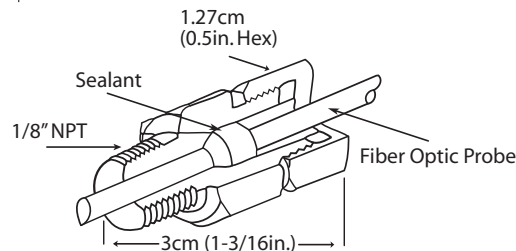
## MicroProbe

Temperature Range: 0 to 120°C  
 Response Time: <200ms in stirred water  
 Length: 1 meter



## Compression Gland Feedthrough

Material: 304 Stainless  
 Compatible Probes: STM, ST, and STR  
 Temperature Range: -20 to 230°C  
 Maximum Vacuum: 5e10<sup>-6</sup> Torr  
 Maximum Pressure: 3,000psi  
 Sealing Gland: Viton



<sup>1</sup> Can be custom ordered to measure temperatures as low as -200°C.

<sup>2</sup> One FOC-ST extension required per probe

<sup>3</sup> One MedFP extension required



Specifications subject to change without notice. Luxtron and Fluoroptic are registered trademarks and TrueTemp is a trademark of LumaSense Technologies, Inc. ©2007 LumaSense Technologies, Inc. All rights reserved.