

MIKRON Thermal Imaging Products

Imaging Solutions from a Company at the Forefront of Near and Far Infrared Thermal Imaging Technology

- Turn-key solutions from the global leader
- Exceptional image quality, speed and accuracy
- Wide variety of wavelengths tailored for specific applications
- Powerful software provides easy-to-use automation and visualization
- Hardened solutions for industrial and process environments
- Lightweight and convenient portable models

Inspection



Model	M7815	M7816DV
Temperature Range	-40 to 500°C	-40 to 500°C
Resolution	320 x 240 Pixels	160 x 120 Pixels
Wavelength	8 to 14 μm	8 to 14 μm
Display	3.5"	3.5"

Predictive Maintenance



Model	M7800/HT	M7600
Temperature Range	-40 to 500°C/ 2,000°C	-40 to 500°C
Resolution	320 x 240 Pixels	320 x 240 Pixels
Wavelength	8 to 14 μm	8 to 14 μm
Display	3.5"	3.5"/Viewfinder

R&D/Specialty



Model	M7604F	M7604G
Temperature Range	-40 to 1,600°C	-40 to 1,600°C
Resolution	320 x 240 Pixels	320 x 240 Pixels
Wavelength	8.0 to 14 μm plus 3.9 μm	8 to 14 μm plus 4.8 to 5.2 μm
Display	3.5"/Viewfinder	3.5"/Viewfinder

Long Wave Infrared



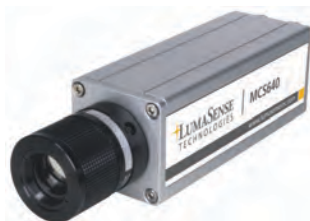
Model	M7500L	M7500HT
Temperature Range	-40 to 120°C, 0 to 500°C	200 to 1600°C
Resolution	320 x 240 Pixels	320 x 240 Pixels
Wavelength	8 to 14 μm	8 to 14 μm
NETD	0.06°C, $\pm 2\%$	0.06°C, $\pm 2\%$
Applications	Automated Refractory and Safety Monitoring	Automated Refractory and Safety Monitoring

Mid Wave Infrared



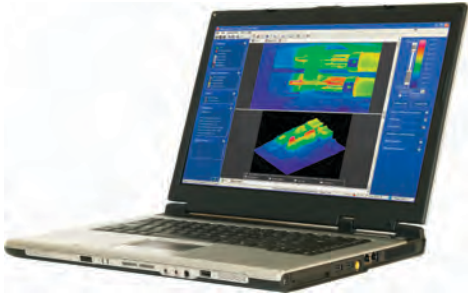
Model	M7500M	M7500F/HT	M7500G/HT
Temperature Range	150 to 500°C, 200 to 800°C	200 to 800°C/ 600 to 1600°C	200 to 800°C/ 600 to 1600°C
Resolution	320 x 240 Pixels	320 x 240 Pixels	320 x 240 Pixels
Wavelength	3 to 5 μm	3.9 μm	4.8 to 5.2 μm
NETD	0.06°C, $\pm 2\%$	0.06°C, $\pm 2\%$	0.06°C, $\pm 2\%$
Applications	Rolling Processes	Ide Furnaces, Boilers and Kilns	Glass Manufacturing and Forming

Short Wave Infrared



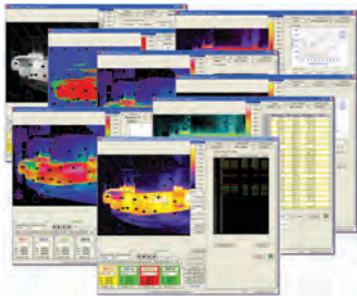
Model	MCS640	MCS640-HD
Temperature Range	600 to 3000°C in up to 4 customer-specified ranges	600 to 3000°C in up to 4 customer-specified ranges
Resolution	640 x 480 Pixels	640 x 480 Pixels
Wavelength	1 μm	1 μm
NETD	$\pm 5\%$	0.06°C, $\pm 5\%$
Applications	Metal Surfaces	Metal Surfaces

MikroSpec 4.0 Software



- Built-in lens/distance and heat loss calculators
- Multiple color palettes for optimal image clarity
- Thermal/visual image blending
- Combine multiple images using Mosaic tool
- Compare images using Blender and Subtraction
- Includes easy-to-use OLE-2 compliant Report Writer
- Read and save images in JPEG format
- Compatible with all MIKRON brand cameras

MikroSpec R/T Software



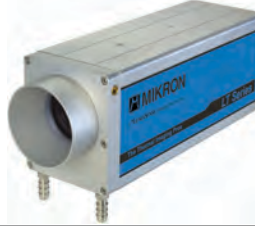
- Monitor processes in real-time
- Monitor minimum, maximum, and average temperatures in multiple regions of interest
- Generate software or digital output alarms and record them to log files
- Multiple color palettes for optimal image clarity
- Save and replay image sequences
- Compare current input with saved images using Averaging and Subtraction
- Free updates for 12 months
- Capture data at a user-adjustable rate

Enclosures



Lens Air Purging

Easy air purging for dusty environments such as the food industry



ID-Vision

Easy air/water purging for light duty environments



ThermalSpection 724

Simple weatherproof enclosure and pan & tilt head for monitoring large areas in various industries



ThermalSpection-EX

Air purged and cooled enclosures for intrinsically safe environments such as the chemical and petrochemical industries



Heavy Duty Cooling Jacket

Air purged and water cooled for harsh environments such as the glass industry



BoilerSpection

Air purged and air/water cooled enclosure including protection shield and lens probe for harsh environments such as furnace applications

LumaSense Technologies

Temperature and Gas Sensing Solutions

**Americas and Australia
Sales & Service**
Santa Clara, CA
Tel.: +1 800 631 0176
Fax: +1 408 727 1677

**Europe, Middle East, Africa
Sales & Service**
Frankfurt, Germany
Tel.: +49 69 97373 0
Fax: +49 69 97373 167

**India
Sales & Support Center**
Mumbai, India
Tel.: +91 22 67419203
Fax: +91 22 67419201

**China
Sales & Support Center**
Shanghai, China
Tel.: +86 133 1182 7766
Fax: +86 21 5039 8096

info@lumasenseinc.com

LumaSense Technologies, Inc., reserves the right to change the information in this publication at any time.

www.lumasenseinc.com

©2011 LumaSense Technologies. All rights reserved
Rev. A June 2011