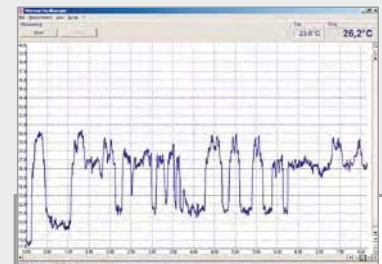




thermoMETER LS Infrared thermometer with crosshair laser sighting

The LS is the most sophisticated IR hand held device. It provides an accurate measurement with its precision optics (adjustable for close or far field focus) and marks the actual true measurement with a laser crosshair, eliminating the guesswork out of handheld IR devices. It is fully programmable, offers a digital interface for on and offline data logging and includes a thermocouple plug in.

- Measuring range from -35° to +900°C
- The new performance standard with spot sizes as small as 1mm
- Crosshair laser sighting marks the actual spot size at any distance
- Optical resolution 75:1
- Response time 150ms
- Thermocouple input
- USB interface and graphic software with oscilloscope function
- Multi function flip display
- Programmable emissivity
- High and low limits
- Statistical data processing



Optical specifications thermoMETER LS

□ = smallest spot size (mm)

Standard Focus optics	75:1	20	16	40	70	100	130
		distance in mm	0	1200	2000	3000	4000
Close Focus optics	CF 75:1	17	1	123	262		
		distance in mm	0	62	500	1000	

Flip display for multi purposes:
Measurement of smallest objects (1mm) on a circuit board - data transfer via USB to a common PC

Model	thermoMETER LS
Optical resolution	75:1
Temperature range	-35 to 900°C
Spectral response	8 to 14µm
System accuracy	±0.75°C or ±0.75% ¹⁾
Temperature coefficient	±0.05°C or ±0.05% ¹⁾
Response time (95%)	150ms
Repeatability	±0.5°C or ±0.5% ¹⁾
Switchable to focus	1mm @ 62mm (90%)
Smallest spot	1mm
Laser class II	standard focus: patented crosshair laser (crosshair size = IR spot size@any distance) close focus: two point laser (laser dot size = IR spot size@focus distance)
Emissivity/gain	0.100 to 1.100 (adjustable)
Configurations	MAX/MIN/HOLD/DIF/AVG/°C/°F
Alarm functions	audible and visible HIGH/LOW alarm
Display	LC flip display (horizontal and vertical viewing directions controlled by position sensor)
Display LCD backlight	green and alarm colours (red, blue)
Bar graph display	auto scaling
Ambient temperature	0 to 50°C
Storage temperature	-30 to 65°C
Relative humidity	10 - 95% (non condensing)
Weight	420g
EMV	89/336/EWG
Vibration/Shock	IEC 68-2-6: 3 G, 11-200Hz, any axis IEC 68-2-27: 50 G, 11ms duration, any axis
Temperature range t/c probe input	-35 to 900°C (-30 to 1650°F)
Accuracy t/c probe input	±0.75°C or ±1% of reading ¹⁾
Interface, data output	USB
Data memory	100 measurement protocols with time stamps, customizable 4 digit location and material names
Software	CompactConnect oscilloscope software with 20 readings per second
Power	battery 2xAA Alkaline or via USB
Battery life time	5h with laser on and 50% backlight use 10h with laser on and w/o backlight 25h w/o laser and backlight
Tripod mount	1/4-20 UNC
Option	certificate of calibration or DKD certificate

¹⁾ whichever is greater; ± at ambient temperatures 23 ±5°C; 20 to 900°C range

Scope of supply

- ▶ thermoMETER LS
- ▶ USB cable and software
- ▶ t/c type K insertion probe
- ▶ carrying case
- ▶ padded pouch
- ▶ wrist strap
- ▶ manual
- ▶ cells

Index	Datum	Uhrzeit	TObj	Min. TObj	Max. TObj	Mittl. TObj	Tint	TExt	Hi-Alarm	Lo-Alarm	Eps	Name
1	14.10.2005	20:58:14	25.8°C	25.8°C	25.9°C	25.8°C	26.0°C	25.7°C	29.7°C	-40.0°C	0.946	PO00
2	14.10.2005	20:13:50	26.8°C	26.8°C	29.8°C	27.9°C	27.3°C	28.7°C	-40.0°C	0.946	PO01
3	14.10.2005	20:58:24	26.0°C	25.6°C	26.0°C	25.8°C	26.0°C	25.7°C	29.7°C	-40.0°C	0.946	PO02
4	14.10.2005	20:58:28	25.7°C	25.6°C	25.8°C	25.7°C	26.0°C	25.8°C	29.7°C	-40.0°C	0.946	LH12
5	14.10.2005	20:58:58	25.5°C	25.5°C	25.8°C	25.6°C	26.0°C	25.9°C	29.7°C	-40.0°C	0.946	PO04
6	14.10.2005	20:17:20	599.6°C	29.2°C	600.5°C	538.2°C	27.2°C	28.7°C	-40.0°C	0.947	PO05
7	14.10.2005	20:14:06	26.8°C	26.8°C	29.8°C	27.9°C	27.3°C	28.7°C	-40.0°C	0.946	PO06
8	18.10.2005	13:16:46	22.3°C	22.0°C	23.0°C	22.4°C	25.6°C	900.0°C	-40.0°C	1.000	PO07
9	19.10.2005	17:05:06	23.0°C	21.3°C	23.2°C	22.6°C	26.8°C	900.0°C	-40.0°C	0.999	PO08
10	19.10.2005	17:05:12	23.0°C	21.3°C	23.2°C	22.6°C	26.8°C	900.0°C	-40.0°C	0.999	PO09
11	19.10.2005	17:05:28	34.6°C	24.8°C	34.6°C	28.8°C	26.8°C	900.0°C	-40.0°C	0.999	PO10
12	20.10.2005	13:50:46	24.6°C	24.2°C	26.0°C	24.5°C	27.1°C	30.0°C	-40.0°C	1.000	PO11
13	20.10.2005	13:28:25	24.1°C	24.1°C	24.3°C	24.1°C	27.0°C	29.1°C	-40.0°C	0.950	PO12
14	20.10.2005	13:51:13	51.1°C	21.0°C	51.2°C	37.3°C	27.1°C	30.0°C	-40.0°C	1.000	PO13
15	20.10.2005	13:53:29	21.8°C	21.8°C	21.9°C	21.8°C	27.3°C	30.0°C	-40.0°C	1.000	PP5L
16	20.10.2005	18:06:45	48.7°C	24.3°C	48.6°C	41.2°C	24.5°C	30.0°C	-40.0°C	0.950	PO15
17	20.10.2005	18:08:49	-11.1°C	-11.4°C	4.8°C	-10.7°C	24.6°C	30.0°C	10.0°C	0.950	PO16

Software IRConnect

- Data logging
- Display and recording of temperature graphs
- Modifications of handheld settings

System requirements

- Windows XP, Windows 2000
- USB 2.0
- Hard disc min. 30 MByte
- min. 128 MByte RAM
- CD-ROM drive



thermoMETER MS Intelligent universal infrared thermometer

The MS series offers the most economic IR hand held device. With three different models, it provides the best performance / price ratio for your individual application. With a digital interface data logging and analysis are made really easy.

- Measuring range from -32° to + 760°C
- The new performance standard with spot sizes as small as 1mm
- Laser aiming aid
- Optical resolution 40:1
- Response time 300ms
- USB interface and graphic software with oscilloscope function
- Programmable emissivity
- High and low limits

Optical specifications thermoMETER MS

□ = smallest spot size (mm)

MS / MS Plus	20:1	13	20	37	50
distance in mm		140	300	700	1000
MS Pro	40:1	13	15	22	27
distance in mm		260	400	800	1000

Model	MS	MS Plus	MS Pro
Optical resolution	20:1		40:1
Temperature range ¹	-32°C to 420°C	-32°C to 530°C	-32°C to 760°C
Spectral range	8 to 14µm		
System accuracy ^{2,3}	±1% / ±1°C (from 0°C to 420°C)	±1% / ±1°C (from 0°C to 530°C) ±1°C / ±0.07°C / °C (from 0°C to -32°C)	±1% / ±1°C (from 0°C to 760°C)
Repeatability ^{2,3}	±0.5% / ±0.7°C (from 0°C to 420°C) ±0.7°C±0.05°C / °C (from 0°C to -32°C)	±0.5% / ±0.7°C (from 0°C to 530°C)	±0.75% / ±0.75°C (from 0°C to 760°C) ±0.75°C±0.07°C / °C (from 0°C to -32°C)
Temperature resolution	0.2°C	0.1°C	
Response time	300ms (95%)		
Ambient temperature	0°C to 50°C		
Storage temperature	-20°C to 60°C without battery		
Emissivity	fixed: 0.95	0.1 – 1.1 adjustable	
Configurations	Min/Max/Hold/°C/°F	Min/Max/Hold/°C/°F/Offset	
Alarm functions	-	Visual and acoustic HIGH-/LOW-alarm	
PC Interface, Software, Thermocouple Input	USB interface	USB interface, IRConnect software	USB interface, IRConnect software, thermocouple element type K
Laser	<1mW laser class IIa, laser beam with 9mm offset		
Weight/Dimensions	150g; 190 x 38 x 45mm		180g; 190 x 38 x 45mm
Battery	9V alkaline battery		
Battery life	20h with laser and backlight on 50% 40h with laser and backlight off		
Relative humidity	10 – 95% RH non condensing, at <30°C ambient temperature		
Standard accessories	-	soft pouch, wrist strap, tripod adapter, rubber protection boot	
Optional	certificate of calibration		

¹ adjustable via software

² object temperature >0°C; whichever is greater

³ ± at ambient temperature 23 <5°C

Index	Datum	Uhrzeit	TObj	Min. TObj	Max. TObj	Mittl. TObj	TInt	TExt	HiAlarm	LoAlarm	Eps	Name
1	14.10.2005	20:58:14	25.8°C	25.8°C	25.9°C	25.8°C	26.0°C	25.7°C	29.7°C	-40.0°C	0.946	P000
2	14.10.2005	20:13:50	26.8°C	26.8°C	29.8°C	27.9°C	27.3°C	28.7°C	-40.0°C	0.946	P001
3	14.10.2005	20:58:24	26.0°C	25.6°C	26.0°C	25.8°C	26.0°C	25.7°C	29.7°C	-40.0°C	0.946	P002
4	14.10.2005	20:58:28	25.7°C	25.6°C	25.8°C	25.7°C	26.0°C	25.8°C	29.7°C	-40.0°C	0.946	LH12
5	14.10.2005	20:58:58	25.5°C	25.5°C	25.8°C	25.6°C	26.0°C	25.9°C	29.7°C	-40.0°C	0.946	P004
6	14.10.2005	20:17:20	599.6°C	29.2°C	600.5°C	538.2°C	27.2°C	28.7°C	-40.0°C	0.947	P005
7	14.10.2005	20:14:06	26.8°C	26.8°C	29.8°C	27.9°C	27.3°C	28.7°C	-40.0°C	0.946	P006
8	18.10.2005	13:16:46	22.3°C	22.0°C	23.0°C	22.4°C	25.6°C	900.0°C	-40.0°C	1.000	P007
9	19.10.2005	17:05:06	23.0°C	21.3°C	23.2°C	22.6°C	26.8°C	900.0°C	-40.0°C	0.999	P008
10	19.10.2005	17:05:12	23.0°C	21.3°C	23.2°C	22.6°C	26.8°C	900.0°C	-40.0°C	0.999	P009
11	19.10.2005	17:05:28	34.6°C	24.8°C	34.6°C	28.8°C	26.8°C	900.0°C	-40.0°C	0.999	P010
12	20.10.2005	13:50:46	24.6°C	24.2°C	26.0°C	24.5°C	27.1°C	30.0°C	-40.0°C	1.000	P011
13	20.10.2005	13:28:25	24.1°C	24.1°C	24.3°C	24.1°C	27.0°C	29.1°C	-40.0°C	0.950	P012
14	20.10.2005	13:51:13	51.1°C	21.0°C	51.2°C	37.3°C	27.1°C	30.0°C	-40.0°C	1.000	P013
15	20.10.2005	13:53:29	21.8°C	21.8°C	21.9°C	21.8°C	27.3°C	30.0°C	-40.0°C	1.000	PPSL
16	20.10.2005	18:06:45	48.7°C	24.3°C	48.6°C	41.2°C	24.5°C	30.0°C	-40.0°C	0.950	P015
17	20.10.2005	18:08:49	-11.1°C	-11.4°C	4.8°C	-10.7°C	24.6°C	30.0°C	10.0°C	0.950	P016

Schließen Datei Öffnen... Sichern als ... Logger Löschen ...

Software IRConnect

(included with MS Pro series)

- Data logging
- Display and recording of temperature graphs
- Modifications of handheld settings

System requirements

- Windows XP, Windows 2000
- USB 2.0
- Hard disc min. 30 MByte
- min. 128 MByte RAM
- CD-ROM drive